

**IRONHOUSE SANITARY DISTRICT  
WASTEWATER TREATMENT PLANT  
EXPANSION PROJECT**



**CONSTRUCTION MANAGEMENT**

**PROGRESS REPORT No. 25**

**May 2011**

## SUMMARY OF CONSTRUCTION STATUS

**Contractor: Western Water Constructors, Inc**

Base Contract Amount.....	\$ 54,455,209.00
Change Orders Executed.....	\$ 774,860.53
Total Contract Cost.....	\$ 55,230,069.53
Contract Amount Earned.....	\$ 50,733,773.00
Progress Payment for May 2011 (includes retention) .....	\$ 552,278.00
Retention Withheld.....	\$ 27,614.00
Previous Progress Payments (excludes retention).....	\$ 47,672,421.00
Estimated Percent Complete.....	<b>91.9%</b>

**Schedule**

Notice to Proceed.....	April 20, 2009
Base Contract Duration.....	900 consecutive days
Original Completion Date.....	October 6, 2011
Time Extension Authorized .....	6 day
Revised Duration .....	906 consecutive days
Revised Completion Date .....	<b>October 12, 2011</b>
Weather Days (included in base duration).....	40 days
Weather Days Expended (included in time expended).....	17 days
Time Expended .....	771 Days
Percent Time Expended .....	84.8%

# Construction Manager's Summary

## 1. Schedule

The current schedule shows project completion on schedule. The critical path continues to run through the startup activities and electrical installation. However, as the project completion date nears, there is little if any float available on all activities.

## 2. Work Progress

### Site Piping/Electrical

Installation of storm drain pipe and site lighting duct bank continued.

Work began on the biofilter installations.

### Influent Pump Station

No work this period.

### Headworks

The HVAC equipment installation continued. The concrete coating was applied on the top of the deck. Testing and startup activities continued.

### Anoxic/Aeration Basins

Process control testing continued for the AA Basins.

### MBR and Backpulse Tank

Commissioning, testing and training of the MBR equipment was nearly completed.

### Chemical/Blower Building

Installation of the chemical systems was completed. Testing and startup of the chemical blower pumps continued. Blower startup and testing continued.

### Solids Handling Building

Electrical installation continued throughout the Solids Handling Building.

### UV/Effluent Pump Station

Installation of the UV equipment continued and commissioning began.

Analyzer equipment was installed in the analyzer building.

Effluent Pump Station startup, testing and training was completed.

### Outfall Installation

A short section of pipe between the outfall and the FE piping at Jersey Island remains. The contractor and manufacturer continued to lay out the piping for final tie-in.

### **3. Contract Changes**

Six contract change orders were issued in May for a net total of \$24,283.00.

### **4. Testing**

There were minimal soils and welding inspections required in May and no concrete inspection. Additional soils testing will be required once final grading operations resume.

### **5. Anticipated Work for Next Month**

Civil work will continue including storm drainage and light pole installations. Final grading will begin.

Installation and testing of the biofilters will continue.

Process control testing on the UV equipment will begin.

Electrical work and startup and testing activities will continue in the Solids Handling Building.

Startup and testing of all equipment required prior to seeding the plant will be completed including the Influent Pump Station, Headworks, AA Basins, Chemical/Blower Building, and MBR.

# PROJECT ADMINISTRATION

---

## SUBMITTAL STATUS

	Received		Returned	Pending
	To Date	May	To Date	
First Time Shop Drawing Submittals	656	5	655	1
Request for Information	799	9	797	2

---

## CHANGE ORDER SUMMARY

	Number	Amount
Change Orders Executed in May	6	\$24,283.00
Change Orders Executed to Date	126	\$774,860.53
Percent to Date of Original Contract		1.42 %

---

## WEATHER RELATED DELAYS

	Days
Base Contract Allowance	40
Weather Related Days in May	0
Weather Related Days to Date	17



Installation of Storm Drainage Facilities



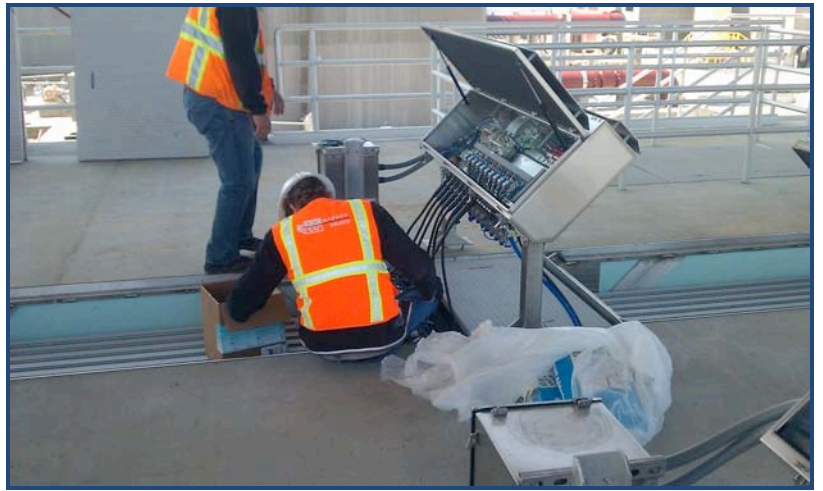
Installation of the Biofilters



Chemical Totes Installed, Pumps Tested



Analyzer Building Equipment Installation



UV Equipment Installation and Commissioning



Effluent Pump Station Startup, Testing and Training